



The Face of Fillmore

By Sherry Shepard
October 17, 2012

The Face of Fillmore is changing right before our eyes. An exciting new attraction on Main Street has many drivers straining their necks to get a good look as they drive by the corner of Main and Center. On the north side of the building that occupies the southeast corner of that intersection, a colorful new mural is being painted by Doug Jolley.

I first noticed the mural in early October as I turned the corner to go to the post office. At that point there were splotches of blue and tan with a gray curved line beginning at ground level and going high up the wall. Just a few days later, I could tell the gray was the trunk of an enormous tree. At this writing there are details in the shading on the trunk, as well as leaves on the branches.

The mural was the idea of Peggy Christensen who owns the picture frame store in that same parking lot. With permission from the owners of the building, Tresa and Josh Cranney, plans for the mural began. Doug Jolley was approached about doing the painting and Peggy said she would furnish the paint. On warm days, Doug can be seen painting on the project. His time is limited as the temperature must be above 50° for the paint.

Upon questioning Doug about the mural, he was very tight-lipped about the finished project. All he would tell me was to “watch for things in the tree”. He knew that I would be curious enough to ride by almost every day to see what was appearing there.

The wall Doug is painting on has an important spot in Fillmore’s history. Although he and I decided that it was probably not the actual original wall, as this one is made of cinder blocks, it is



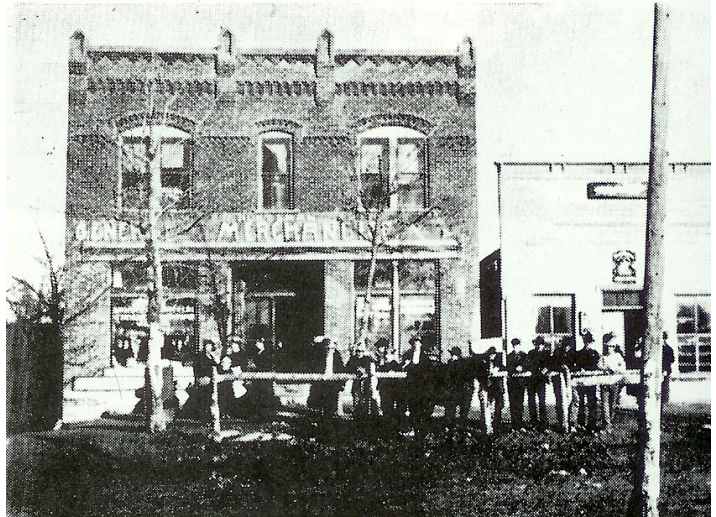
The Hanson Hotel, home of the Gabriel Hanson Family; built in 1877 by Hans Hanson, who had the contract; James and Ralph Rowley laid the brick. All of the fancy

detail work was done by Hans Hanson. There were twenty-four rooms, an attic, and a two-roomed basement.

in a very historic location.

In 1872 the Huntsman Hotel opened on that very corner. The hotel boasted 24 guest rooms with large porches on the first and second floors. These were decorated with fancy hand-carved posts and railings. There was a beautifully decorated dining area as well, as even a barbershop. The spacious brick building had a frame addition on the back, which served as living quarters for the family. There was also a large barn for where guests could put their horses for the night. Built in 1872 by Gabriel and Eunice Huntsman, the hotel often provided lodging for Brigham Young and other statesmen when they conducted business in Utah's territorial capitol. A replica of the hotel is now found at This Is the Place State Park in Salt Lake City.

Gabriel Huntsman began his mercantile business in 1894 near the corner of First South and Main Streets where he operated a meat market in the basement of John Kelly's store. Later he bought a frame building built by John King, which was on the corner of Second North and Main. He thought this was too far from the center of business in town so he had it brought to the spot just south of the brick building that Bradshaw Auto Park was in.



Gabriel Huntsman's "new" store was built just north of the old one. Business was booming to the point that

Mr. Huntsman needed to expand the space for his merchandise. He built the addition that is where the insurance office is now. When this building was constructed, it shared a wall with the old hotel.

With the wall taking on a new look; we again express our appreciation to those who are always looking for ways to improve the Face of Fillmore.